

# POOLcontrol-40.NET<sup>®</sup>

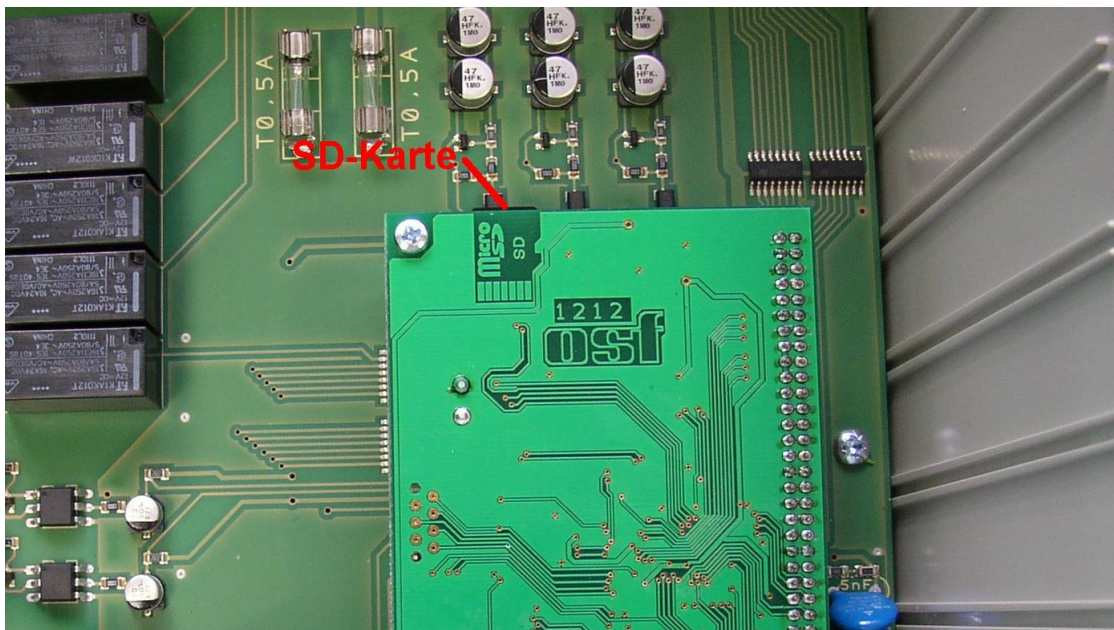
## Updating the software in the control unit

The software in the PC-40.net is constantly being developed, expanded and adapted to changing needs. In order for the owners of older devices to be able to participate in this technical progress, the PC-40.net has the option of updating the software in the control even after delivery.

Only a few steps are required for such an update:

1. Disconnect PC-40.net from the power supply.
2. Remove the front cover.
3. Remove the memory card from the board.
4. Download the ZIP archive with the update files from [http://osf.de/download/download.php?dll=Kundenbereich/Updates/PC40\\_update.zip](http://osf.de/download/download.php?dll=Kundenbereich/Updates/PC40_update.zip).
5. Unpack all files and directories from the ZIP archive and copy them to the memory card.
6. Insert modified memory card into the socket on the board.
7. Re-mount the front cover.
8. Switch the power supply on again.

The update process will start automatically.



**The electrical connection as well as the work of adjustment and servicing should be carried out only by an approved electrician.**

For a video demonstration of the procedure, see

<https://osf.de/download/documents/PC-40-net/English Documents/Softwareupdate PC-40.net.mp4>

## Updating the software online

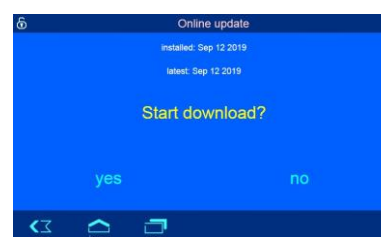
For devices with a software version from 2018 onwards, there is the option of updating the software in the controller online using the integrated web server.

The device does not have to be opened for such an update.

Log in with the SERVICE PIN (factory setting 5678) and press the "esc" button on the start page

Click on the text "Check for update"

Follow the further instructions on the screen



**osf Hansjürgen Meier . Elektrotechnik und Elektronik GmbH & Co KG**  
Postfachanschrift: Postfach 1405 D-32328 Espelkamp  
Hausanschrift: Eichendorffstrasse 6 D-32339 Espelkamp  
Telefon (05772) 9704-0  
Telefax (05772) 5730  
E-Mail: info@osf.de  
Internet: www.osf.de

